

GEOTAB®

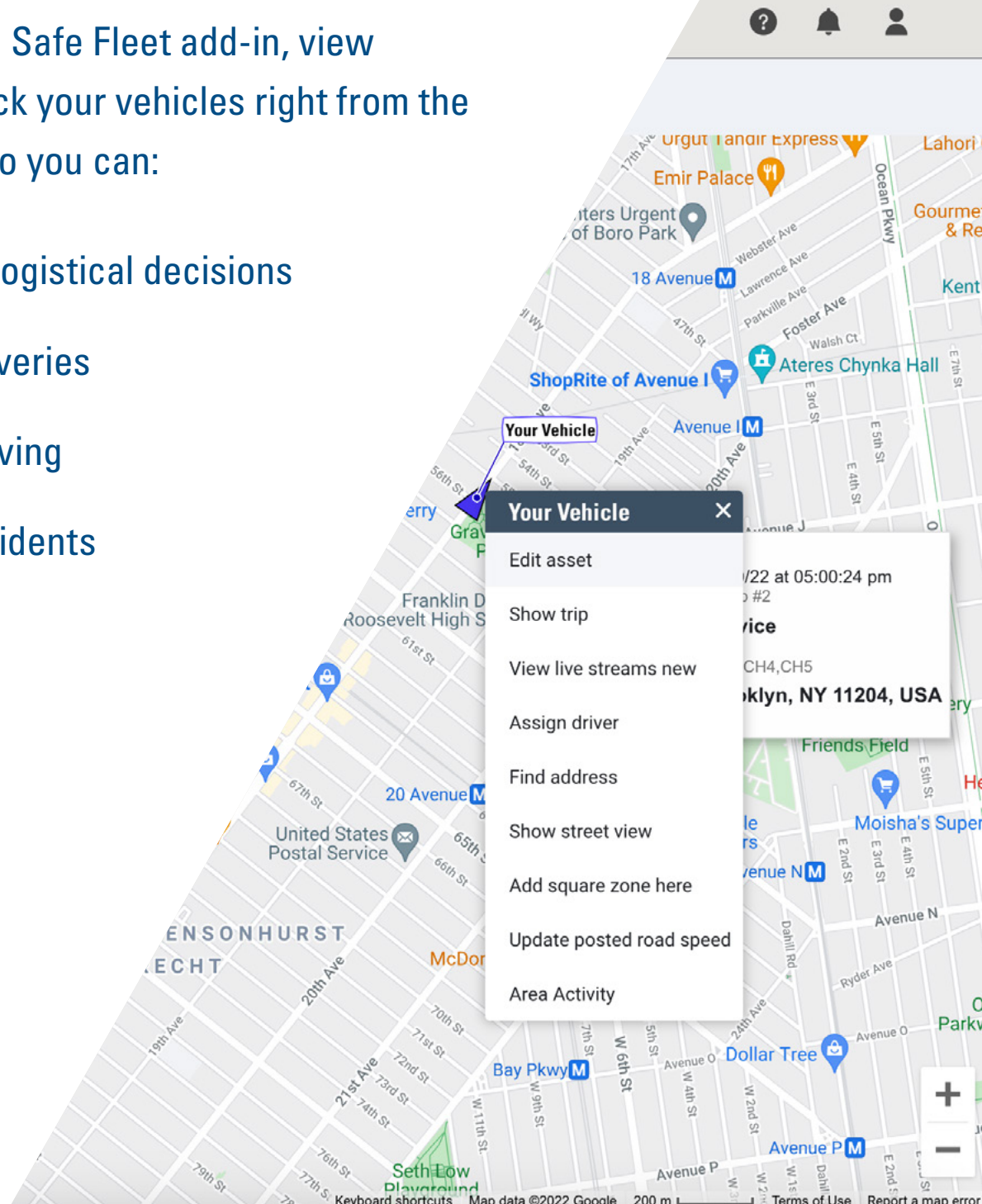
Installation Guide

Safe Fleet Add-In and myGeotab



With Geotab and Safe Fleet add-in, view cameras and track your vehicles right from the myGeotab map so you can:

- Make efficient logistical decisions
- Verify your deliveries
- Coach safer driving
- Investigate accidents



Safe Fleet Add-In Installation



NOTE: You must be an Administrator in Geotab to add/remove/update the add-in.

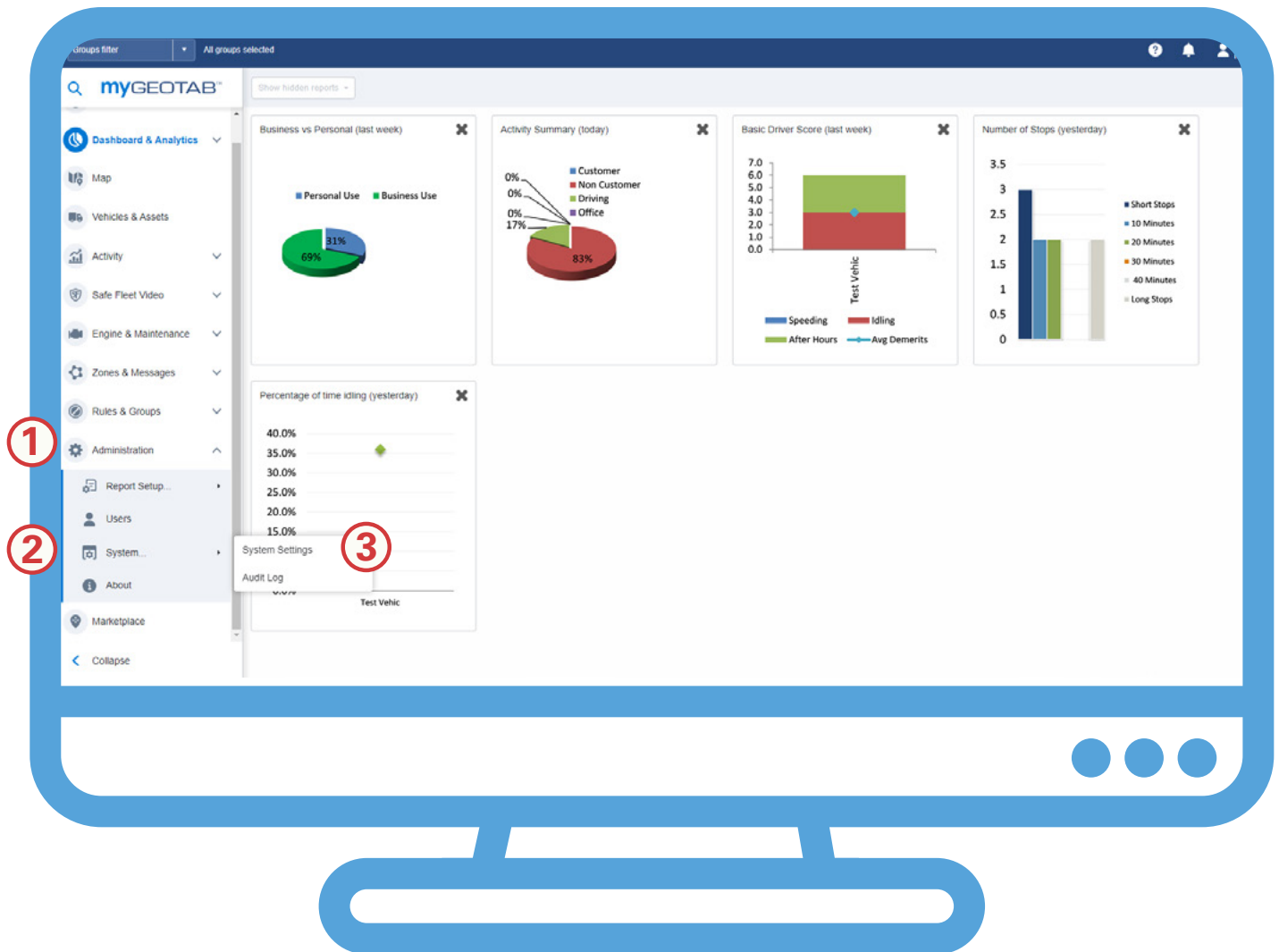
1. Install the Add-In
2. Fill out the enclosed Excel sheet with your corresponding GeoTab serial.
GeoTab searches our database for the matching data.
3. We take it from here!

1.1 Installing The Add-In Manually

NOTE: You need to be logged in as an Admin user to complete these steps

From any screen within myGeotab,

1. Go to 'Administration'
2. Then 'System'
3. Then 'System Settings'

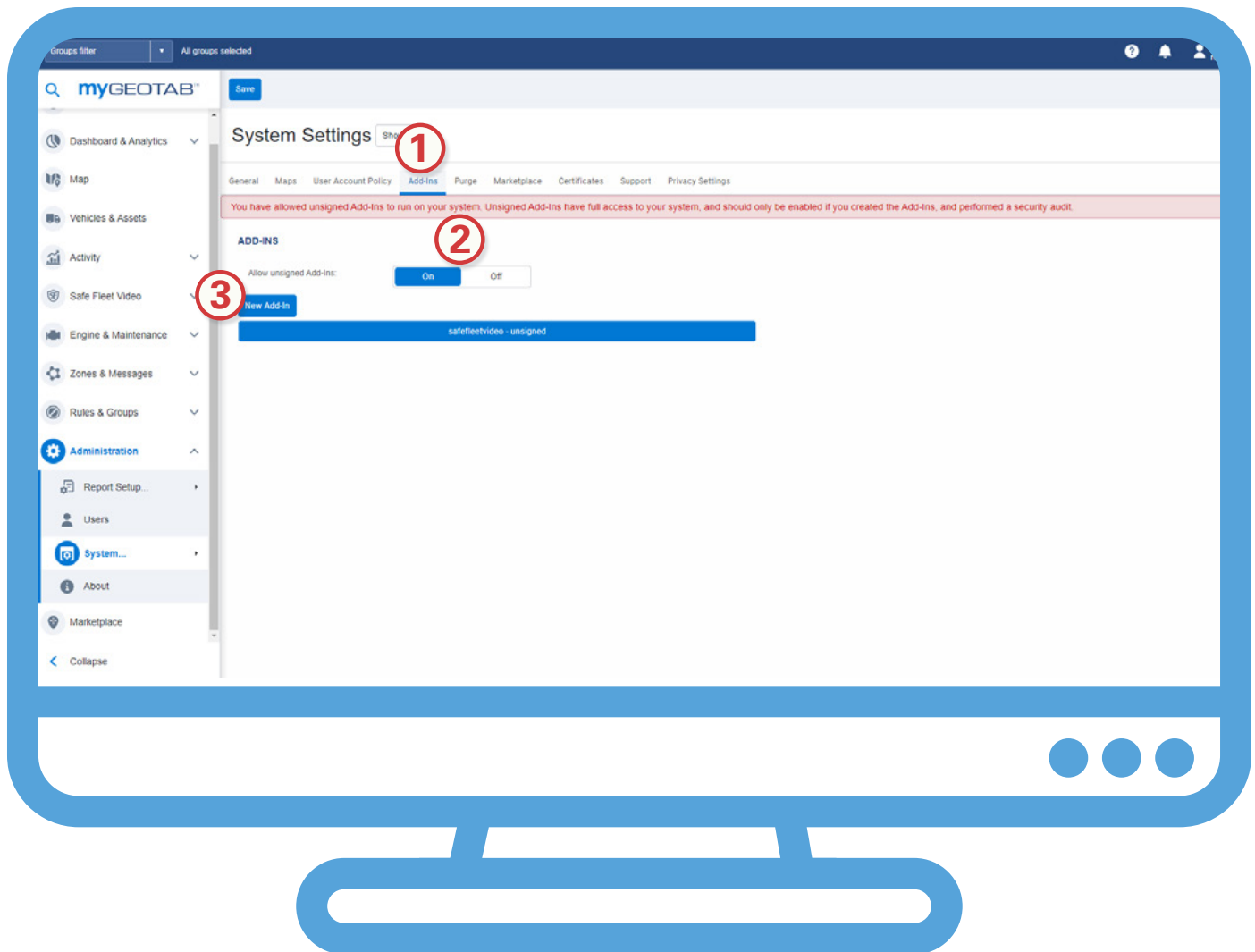


1.2 Installing The Add-In Manually



On 'System Settings' screen,

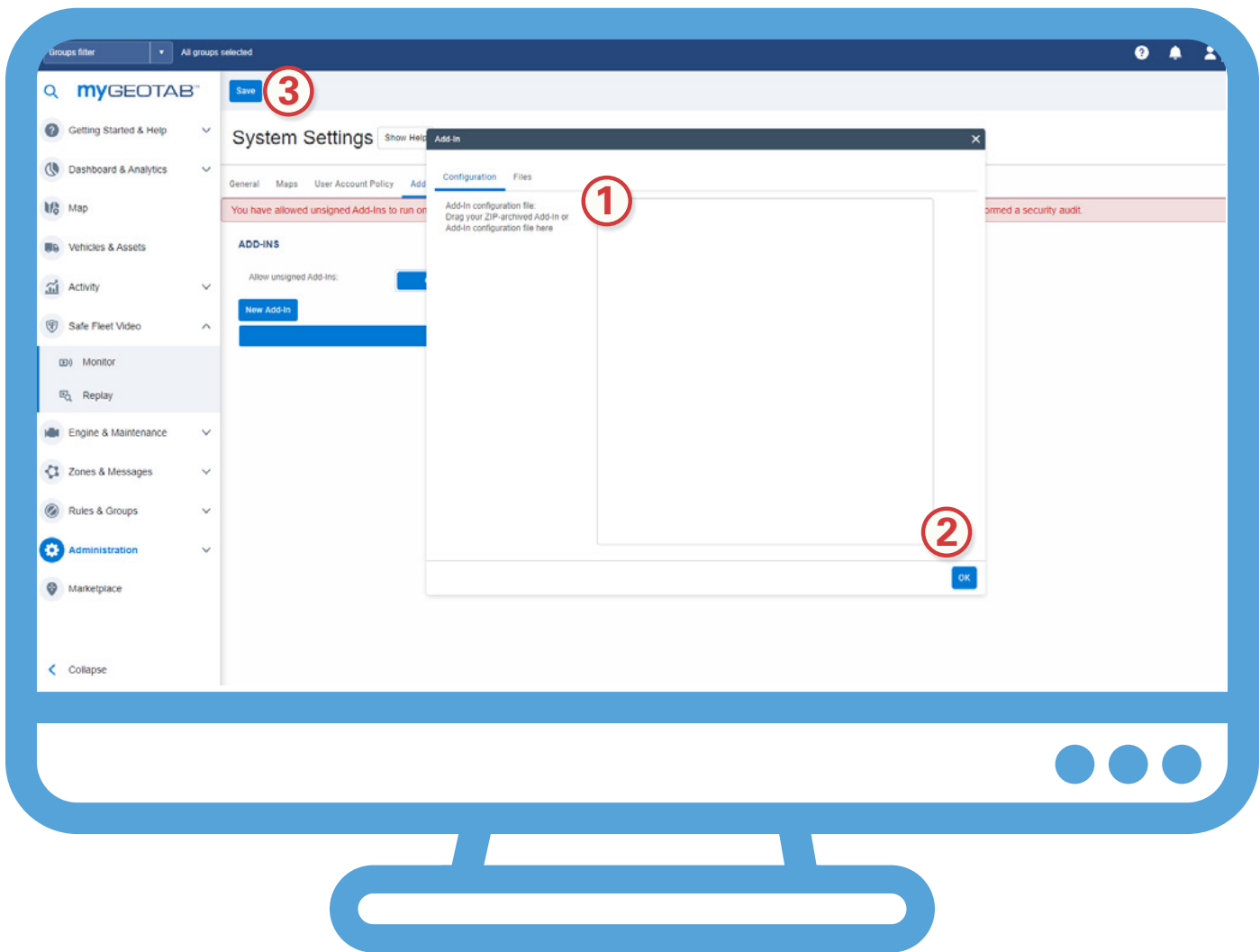
1. Click on the 'Add-Ins' tab
2. Make sure 'Allow unsigned Add-Ins' switch is 'On'
3. Click 'New Add-In' button



1.3 Installing The Add-In Manually



1. Copy and paste the text from Geotab.txt into the 'Add In Configuration' text box.
2. Click **OK**
3. Click **SAVE**



2. Send Us Your Excel Spreadsheet



In order for the Add-in to work , we must have each vehicle's Geotab serial number, device serial number, and vehicle name.

An Excel template is provided for you.



Contact us anytime for questions or assistance.

800.764.1028
email: support.geotab@safefleet.net
safefleet.net